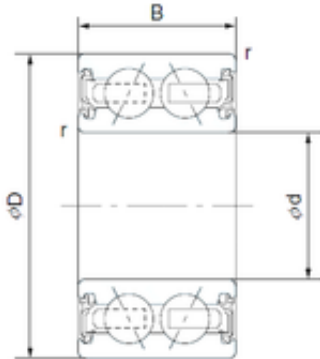




# NTA PRECISION AXLE CORP.

40 mm x 62 mm x 24 mm CYSD 4608-4AC2RS  
angular contact ball bearings



Bearing No. 4608-4AC2RS

Size	40x62x24 mm
Bore Diameter	40 mm
Outer Diameter	62 mm
Width	24 mm
d	40 mm
D	62 mm
B	24 mm
C	20,625 mm
Basic dynamic load rating (C)	18 kN

4608-4AC2RS Bearing 2D drawings and 3D CAD models