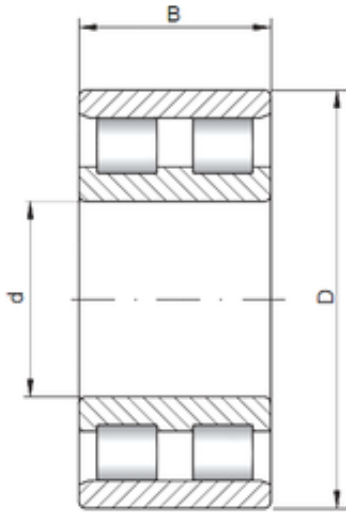




NTA PRECISION AXLE CORP.



220 mm x 300 mm x 80 mm ISO NN4944
cylindrical roller bearings

Bearing No. NN4944

Size	220x300x80 mm
Bore Diameter	220 mm
Outer Diameter	300 mm
Width	80 mm
d	220 mm
D	300 mm
B	80 mm
C	80 mm

NN4944 Bearing 2D drawings and 3D CAD models